

WEALTHSEC

BOARD OF DIRECTORS



Wilson L. Sy

Chairman/Nominee



Florence A. Sy

Director



Ruby S. Tan

Director



Kevin Neil A. Sy

Director



Darlene Mae A. Sy

Director



Timothy Bryce A. Sy

Director



Joseph L. Ong

Independent Director



Bessie C. Ang

Independent Director

PRINCIPAL OFFICERS



Kevin Neil A. Sy
President/Associated Person



Darlene Mae A. Sy
Vice President



Ruby S. Tan
Corporate Secretary



Florence A. Sy
Treasurer



Ricardo P. Puig
Vice President - Research



Bernard C. Aviñante
Vice President – Institutional Sales



Carissa J. Patag
Head of Sales - Retail



Lita J. Dulfo
Associated Person/Data Protection
Officer

SALESMEN



Agarao, Miguel Fabian A.



Agdeppa, Alfredo Jr. E.



Andres, Ann Tamami I.



Andres, Conrado IV I.



Aviñante, Bernard C.



Baal, Genalyn B.



Bacani, Maria Angela M.



Bacani, Edison



Backong, Cristy C.



Balais, Sarah K.



Bolong, Emelita R.



Caagusan, Bernardo C.



Caguioa, Armer B.



Chew, Edwin S.



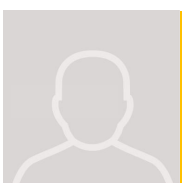
De Lara, Victor Aaron G.



Dela Paz, Ruben V.



Diaz, Arlene K.



Evangelista, Ernest S.



Garcia, Leo M.



Ho, Joshua Hansel T.



King, Geraldine K.



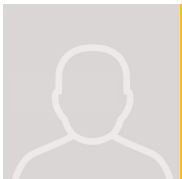
Lim, Vittorio Paulo P.



Ocampo, Marlex G.



Patag, Carissa J.



Pazcoguin, Neil Royce B.



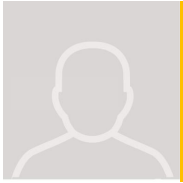
Ricafort, Raymond Alphonse H.



Sarino, Cesar Juan Carlo M.



Sun, Paul Jr. Y.



Tan, Cynthia C.



Tan, Ron Erich O.



Tan, William Edison L.



Teng, Euclid Schuyler O.



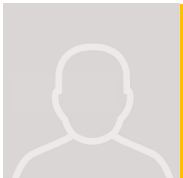
Tesoro, Kit Bonifacio III D.



Uy, Sarah Maria D.



Villanueva, Julio Cesar R.



Yam, Christopher Joseph L.



Young, Engelo M.



Yu, Nikki L.



Yulo, Jose Martin Gabriel C.